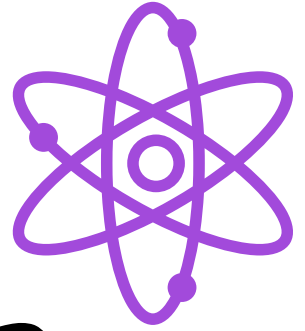
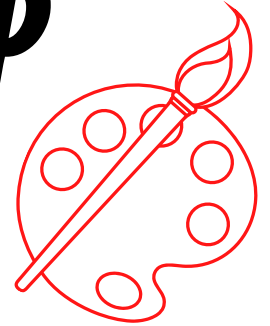




RICHLAND



LEARNING CAMP



Register Today!

Richland Learning Camp (RLC) is more than traditional summer school! Our goal is to provide students with learning experiences in the core content, ELA and math, to address unfinished or missed learning, and also to engage students in exciting enrichment activities.

When?

June 6 - June 30
8:00 a.m. to 3:00 p.m.
(Mondays through
Thursdays only)

Where?

Delhi Elementary School
Mangham Elementary School
Rayville Elementary School

Who:

Current Richland Parish
PK through 11th grade
students

**Scan the QR code to
fill out the
registration form.**



Bus transportation will be provided for zoned school location (see back).

Breakfast and lunch will be provided.

Registration for RLC closes April 4, 2022 at 4:00 p.m. Late registrants will be added to a waiting list.